

# Model for the alpha and beta shear-mechanical properties of supercooled liquids and its comparison to squalane data

Tina Hecksher, Niels Boye Olsen, and Jeppe C. Dyre<sup>a)</sup>

“Glass and Time,” IMFUFA, Department of Science and Environment, Roskilde University, P.O. Box 260, DK-4000 Roskilde, Denmark

(Received 19 January 2017; accepted 20 March 2017; published online 19 April 2017)

This paper presents data for supercooled squalane’s frequency-dependent shear modulus covering frequencies from 10 mHz to 30 kHz and temperatures from 168 K to 190 K; measurements are also reported for the glass phase down to 146 K. The data reveal a strong mechanical beta process. A model is proposed for the shear response of the metastable equilibrium liquid phase of supercooled liquids. The model is an electrical equivalent-circuit characterized by additivity of the dynamic shear compliances of the alpha and beta processes. The nontrivial parts of the alpha and beta processes are each represented by a “Cole-Cole retardation element” defined as a series connection of a capacitor and a constant-phase element, resulting in the Cole-Cole compliance function well-known from dielectrics. The model, which assumes that the high-frequency decay of the alpha shear compliance loss varies with the angular frequency as  $\omega^{-1/2}$ , has seven parameters. Assuming time-temperature superposition for the alpha and beta processes separately, the number of parameters varying with temperature is reduced to four. The model provides a better fit to the data than an equally parametrized Havriliak-Negami type model. From the temperature dependence of the best-fit model parameters, the following conclusions are drawn: (1) the alpha relaxation time conforms to the showing model; (2) the beta relaxation loss-peak frequency is almost temperature independent; (3) the alpha compliance magnitude, which in the model equals the inverse of the instantaneous shear modulus, is only weakly temperature dependent; (4) the beta compliance magnitude decreases by a factor of three upon cooling in the temperature range studied. The final part of the paper briefly presents measurements of the dynamic adiabatic bulk modulus covering frequencies from 10 mHz to 10 kHz in the temperature range from 172 K to 200 K. The data are qualitatively similar to the shear modulus data by having a significant beta process. A single-order-parameter framework is suggested to rationalize these similarities. *Published by AIP Publishing.* [<http://dx.doi.org/10.1063/1.4979658>]

## I. INTRODUCTION

Many organic liquids are easily supercooled and excellent glass formers, usually with the glass transition taking place far below room temperature. Such systems are experimentally convenient for studying the physics of highly viscous liquids, the glass transition, glassy relaxation, etc., phenomena that are believed to be universal for basically all liquids.<sup>1–8</sup> As the liquid is cooled, the relaxation time and the viscosity increase by many orders of magnitude over a narrow temperature range. Beyond the dominant and slowest alpha relaxation process many liquids have additional faster relaxation(s), notably the so-called beta relaxation. The alpha and beta processes are often studied by means of dielectric spectroscopy. They are also present, however, in the liquid’s mechanical properties, which are the focus of this paper presenting squalane data and comparing these to a new, general model for supercooled liquids’ dynamic shear-mechanical properties.

Squalane is a liquid alkane consisting of a linear C<sub>24</sub> backbone with six symmetrically placed methyl groups. Its systematic name is 2,6,10,15,19,23-hexamethyltetracosane. Squalane

is a van der Waals liquid that is an excellent glass former.<sup>1,9–12</sup>

Squalane’s melting point is  $T_m = 235$  K and its glass transition temperature  $T_g \cong 168$  K follows the well-known rule  $T_g \sim (2/3)T_m$ .<sup>5,13</sup> Squalane has a low toxicity and is used in cosmetics as a moisturizer; due to the complete saturation, squalane is not subject to auto-oxidation.<sup>14</sup> In basic research, squalane is used as a reference liquid in tribology and for elucidating the mechanism of elastohydrodynamic friction.<sup>15–18</sup> Squalane has been studied in molecular dynamics simulations of nonlinear flows.<sup>19</sup> Squalane has also been used as a solvent for studying the intriguing Debye dielectric relaxation of mono-hydroxy alcohols,<sup>20</sup> the rotation of aromatic hydrocarbons in viscous alkanes,<sup>21</sup> and the Stokes-Einstein relation for the diffusion of organic solutes.<sup>22</sup> Due to its low vapor pressure, squalane is used as a benchmark molecule for reaction-dynamics experiments performed under ultrahigh vacuum conditions.<sup>23,24</sup>

Measurements of neat supercooled squalane’s dynamic shear modulus in the MHz range were reported many years ago.<sup>25</sup> Subsequent studies of squalane include measurements of its dielectric relaxation<sup>10</sup> and dynamic shear modulus over frequencies ranging from a few mHz to 10 Hz,<sup>9</sup> later extended to 30 kHz.<sup>11</sup> The present paper covers the latter range of frequencies with more accurate data and for more temperatures

<sup>a)</sup>dyre@ruc.dk

than Ref. 11. Our main motivation is not to present new data, however, but to introduce an electrical equivalent-circuit model representing data very well. The model is a modification of one discussed previously by our group by introducing a crucial extra capacitor.<sup>26</sup>

Section II briefly presents the squalane data and the piezo-ceramic transducer used to obtain them. Section III introduces electrical-equivalent circuit modeling of linear shear-mechanical response functions in general and motivates the model. It has four free parameters of dimensions and three dimensionless “shape” parameters that are fixed from the fitting to data at a selected temperature. Section IV shows that the model fits data very well, in fact considerably better than a similar Havriliak-Negami (HN) type model with the same number of parameters. While the paper’s main focus is on dynamic shear data, Section V supplements these by presenting the dynamic adiabatic bulk-modulus data. It is shown that these may be interpreted in terms of an electrical-equivalent circuit model in which the dissipation is controlled by the dynamic shear modulus. Finally, Section VI gives a discussion with a focus on the temperature dependence of the best-fit model parameters, showing that these conform to the shoving model and that the beta process activation energy is temperature independent. If these two findings were built into the model, it would have just two parameters varying with temperature.

## II. DATA FOR THE DYNAMIC SHEAR MODULUS OF SQUALANE

This paper focuses on the modeling of the dynamic shear-mechanical properties of metastable equilibrium supercooled liquids, *in casu* squalane above its glass transition temperature 168 K. Measurements were performed at temperatures down to 146 K, however, which is well into the glassy phase. Data were obtained with 2 K intervals using the three-disc piezo-ceramic shear transducer shown in Fig. 1(a)<sup>27</sup> in the setup described in Ref. 28. The home-built cryostat used keeps the temperature stable within 10 mK. References 29 and 30 give details about the cryostat and the impedance-measuring setup.

Before measuring, the filled transducer was annealed at the highest temperature for 30 h in order to equilibrate the ceramics. After this, with 2 K intervals several temperatures were monitored in decreasing order by for each temperature first equilibrating for 1 h, after which a frequency spectrum was measured which lasted approximately 1 h. This measurement was repeated to ensure reproducibility, i.e., that the liquid is in metastable equilibrium and that the setup works properly. All in all, approximately 3 h were spent at each temperature. The protocol is illustrated for a few temperatures in Fig. 1(b). After all measurements had finished, the empty transducer was calibrated.<sup>28</sup> If everything works, a set of data as those analyzed below may be obtained within less than a week.

Figures 2(a) and 2(b) present the real and imaginary parts of squalane’s dynamic shear modulus  $G(\omega)$  in which  $\omega$  is the angular frequency. Shown in Fig. 2(c) is the so-called Nyquist plot of  $G(\omega)$ , i.e., the real versus imaginary parts parametrized by the frequency; in this figure our data for the glassy phase were included. A strong beta relaxation is observed. Figures 2(d) and 2(e) present the real and imaginary parts of the dynamic shear compliance  $J(\omega) = 1/G(\omega)$ , while Fig. 2(f) gives the Nyquist plot of  $J(\omega)$ .

## III. ELECTRICAL-EQUIVALENT CIRCUIT MODEL

### A. Philosophy of circuit modeling

Some scientists regard the modeling of linear-response data by an electrical-equivalent circuit as old-fashioned. A common argument is that all data may be fitted by an electrical circuit and that, consequently, such models can contribute little if physical insight is the goal. In our opinion this is not quite correct,<sup>32</sup> and the following reasons may be given for using electrical-equivalent circuits for rationalizing data as a first step towards a physical understanding:

- *Physical consistency.* Circuit models guarantee that inconsistencies are avoided. Not only is *linearity* ensured, so is *causality* and *positive dissipation*, requirements that any linear-response model must obey.

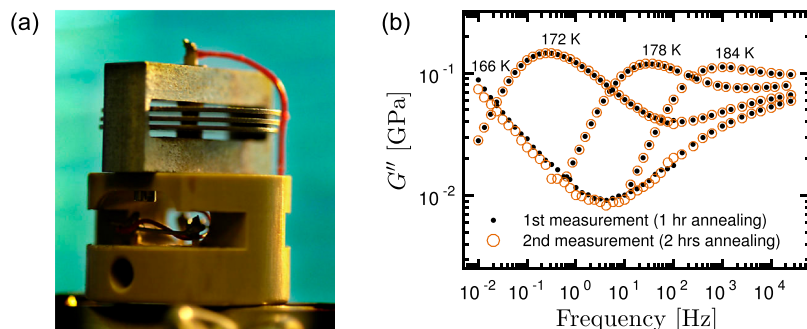


FIG. 1. (a) A three-disc transducer used for measuring the dynamic shear modulus over frequencies from 1 mHz to 50 kHz above which resonances make it impossible to measure in the quasi-static mode.<sup>27</sup> This paper presents data from 10 mHz to 30 kHz. The discs are polarized piezo-ceramics with electrodes on both sides that are electrically coupled in such a way that when the middle disc expands radially, the upper and lower discs contract by half the amount.<sup>27</sup> Each disc has a thickness of 0.5 mm and a diameter of 20 mm. The liquid is placed between discs 1 and 2 and between discs 2 and 3 at room temperature at which squalane has a low viscosity. (b) Examples of data for the imaginary part of the shear modulus as a function of frequency,  $G''(\omega)$ , illustrating the measurement protocol: Starting at a high temperature, data were generated by moving in steps down to 146 K. At each temperature, the sample was equilibrated for 1 h before measuring, which takes approximately another hour (in the present case when the lowest frequency is 10 mHz). The procedure was repeated to ensure reproducibility and that the sample is in (metastable) equilibrium. The 166 K data show that the equilibrium was not reached here. We do not analyze data below 168 K, but above this temperature the liquid is in a state of metastable equilibrium and there is full reproducibility.

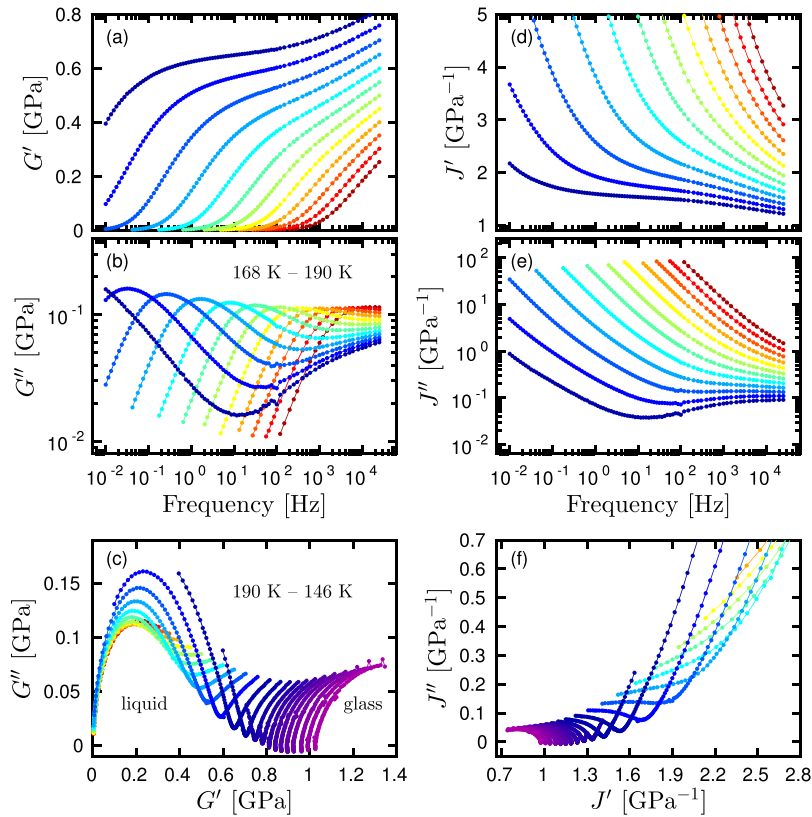


FIG. 2. The dynamic shear modulus  $G(\omega)$  and shear compliance  $J(\omega) = 1/G(\omega)$  of the metastable equilibrium supercooled liquid phase of squalane for temperatures ranging from 168 K to 190 K probed at intervals of 2 K.<sup>31</sup> The blue symbols correspond to low temperatures and the red ones to high temperatures. (a) and (b) show the real and imaginary parts of  $G(\omega) \equiv G'(\omega) + iG''(\omega)$ . (c) shows a Nyquist plot of  $G(\omega)$  with the real part along the  $x$  axis and the imaginary part along the  $y$  axis in a curve parametrized by the frequency; we here included data extending into the glassy state in which only the  $\beta$  process is observable. (d) and (e) show the real and negative imaginary parts of  $J(\omega) \equiv J'(\omega) - iJ''(\omega)$ ; (f) shows a Nyquist plot of  $J(\omega)$  (excluding the highest temperatures).

- *Simplicity.* The electrical circuit defines the model. Even simple circuits represent several differential equations.
- *Same language as that used for modeling the experimental setup.* This paper is concerned with the interpretation of linear-response data for the dynamic shear modulus. The experimental setup used for obtaining the data is itself modeled by an electrical-equivalent circuit,<sup>28–30</sup> and there is an element of economy in using electrical-equivalent circuits for both purposes.
- *High- and low-frequency limits.* These limits are straightforward to identify for a given circuit.
- *Couplings between different linear-response functions are easily introduced.* For glass-forming liquids, a major challenge is to understand the relation between different frequency-dependent linear-response functions like the shear and bulk moduli, dielectric constant, specific heat, etc.<sup>33</sup> Such relations are conveniently modeled via electrical-equivalent circuits related by transformers in which, for instance, charge is transformed into mechanical displacement/entropy, electrical current into velocity (shear rate)/heat current over temperature, and voltage into mechanical force/temperature.<sup>34,35</sup> Shifts between different types of variables are represented by transformer elements with the property that the power—the product of generalized “voltage” and “current”—is invariant. For more details on the general “energy-bond” formalism, the reader is referred to Refs. 34–38; a brief discussion is given below.
- *Straightforward extension to a nonlinear model via parametric control.* An electrical-equivalent circuit’s

parameters vary with the thermodynamic state point. Having such dependencies controlled by charges or voltages at particular points of the circuit opens for constructing simple models of physical aging, which automatically ensure that no fundamental physical laws are violated.

Once an electrical-equivalent circuit has been constructed representing data accurately, this provides an important input for constructing a microscopic physical model of the system in question. We regard the circuit as a help toward eventually obtaining the ultimate microscopic understanding, not as the final model itself.

## B. Basic circuit elements

Rheology has its own circuit language based on dashpots representing the Newtonian viscous flow and springs representing a purely elastic response.<sup>39</sup> This language is mathematically equivalent to that of electrical-circuit modeling, and which language to use is a matter of convenience. As physicists, we are comfortable with electrical circuits. Their use has the additional advantage of easily relating to dielectric relaxation phenomena, which are of great importance for glass-forming liquids<sup>40</sup> and experimentally closely connected to the shear-mechanical properties.<sup>41–44</sup>

Translating from electrical to rheological circuits is a bit counterintuitive when it comes to the diagrammatic representation because series connections become parallel connections and *vice versa*: Two elements in series in an electrical circuit have the *same current*, which corresponds to the analogous rheological elements being placed *in parallel* because the two shear displacements are identical. Likewise, an

electrical-circuit parallel connection translates into a mechanical series connection. Once this is kept in mind, however, the translation between the two languages is straightforward and unique.

Since electrical-equivalent circuits are used for modeling dynamic mechanical relaxation phenomena, we shall not distinguish between the dynamic capacitance  $C(\omega)$  and the dynamic shear compliance  $J(\omega)$ . As mentioned, there is a general circuit-modeling language—the energy-bond graph formalism<sup>34–37</sup>—which may be used also, e.g., for thermal relaxation phenomena. An energy bond is characterized by an “effort” variable  $e$  and a “flow” variable  $f$ , the product of which gives the power transferred into the system from its surroundings. For instance, for a thermodynamic energy-bond  $e$  is the temperature deviation from a reference temperature and  $f$  is the entropy current, i.e., the heat flow over temperature.<sup>34,45,46</sup>

How to translate electrical linear-response functions to the corresponding rheological ones? With the energy-bond formalism in mind, the displacement  $q$  represents the electrical charge or shear displacement (strain), the flow given by  $f \equiv \dot{q}$  represents the electrical current or shear rate, and the effort  $e$  represents the voltage drop or shear stress.<sup>34,36,37</sup>

The most important complex-valued linear-response functions translate as follows when given as functions of the angular frequency  $\omega$  in the standard way, e.g.,  $q(t) = \text{Re}[q(\omega)\exp(i\omega t)]$  in which  $q(\omega)$  is the complex amplitude:

- Electrical capacitance  $C(\omega)$  corresponds to the complex shear compliance  $J(\omega)$  since both are equal to displacement over effort, i.e.,  $q(\omega)/e(\omega)$ . If the symbol  $\sim$  is used for “corresponds to,” this is summarized as follows:

$$C(\omega) \sim J(\omega) \sim \frac{q(\omega)}{e(\omega)}. \quad (1)$$

- Inverse electrical capacitance  $1/C(\omega)$  corresponds to the complex shear modulus  $G(\omega) = 1/J(\omega)$  since both are equal to effort over displacement, i.e.,  $e(\omega)/q(\omega)$ ,

$$\frac{1}{C(\omega)} \sim G(\omega) \sim \frac{e(\omega)}{q(\omega)}. \quad (2)$$

- Electrical impedance  $Z(\omega) = 1/Y(\omega)$  corresponds to the complex shear viscosity  $\eta(\omega)$  since both are equal to effort over flow, i.e.,  $e(\omega)/f(\omega) = e(\omega)/\dot{q}(\omega) = e(\omega)/(i\omega q(\omega))$ ,

$$Z(\omega) \sim \eta(\omega) \sim \frac{e(\omega)}{i\omega q(\omega)}. \quad (3)$$

Three basic circuit elements are used here (Fig. 3(a)): resistors, capacitors, and constant-phase elements (CPEs).<sup>47</sup> A CPE is characterized by a capacitance that as a function of  $\omega$  varies as

$$C(\omega) \propto (i\omega)^{-x} \quad (4)$$

in which  $0 < x < 1$  in the present case where inertia plays no role. The name CPE reflects the fact that the ratio between the real and imaginary parts of  $C(\omega)$  is the same at all frequencies, which implies a constant phase difference between displacement and effort. The CPE is a generalization of capacitors and resistors because a capacitor obeys  $C(\omega) \propto (i\omega)^0 = \text{Const.}$  while a resistor’s capacitance is given by  $C(\omega)$

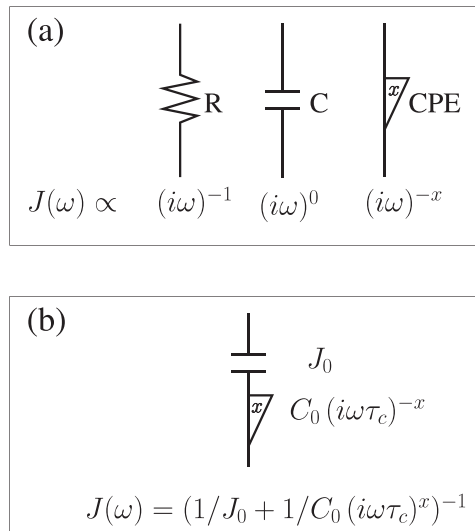


FIG. 3. Electrical-equivalent-circuit modeling. (a) The three basic elements: a resistor (R), a capacitor (C), and a constant-phase element (CPE). Their complex, frequency-dependent capacitances—corresponding to the dynamic shear compliance  $J(\omega)$  (Eq. (1))—vary with angular frequency  $\omega$  in proportion to, respectively,  $(i\omega)^{-1}$ ,  $(i\omega)^0 = \text{Const.}$ , and  $(i\omega)^{-x}$  ( $0 < x < 1$ ). (b) The Cole-Cole retardation element (CCRE) leading to the well-known Cole-Cole expression for the capacitance (shear compliance),<sup>48</sup> Eq. (8).

$\propto (i\omega)^{-1}$ . Thus allowing for  $0 \leq x \leq 1$  there is just a single “Lego brick” in the model tool box, namely the CPE. Note that Eq. (4) translates into the following:

- $J(\omega) \propto (i\omega)^{-x}$  for the CPE dynamic shear compliance;
- $G(\omega) \propto (i\omega)^x$  for the CPE dynamic shear modulus;
- $\eta(\omega) \propto (i\omega)^{x-1}$  for the CPE dynamic shear viscosity.

### C. Parametrizing the constant-phase element

For the CPE, we define a magnitude constant  $C_0$  and a characteristic time  $\tau_c$  by writing

$$C(\omega) = C_0 (i\omega\tau_c)^{-x}. \quad (5)$$

Because the CPE is time-scale invariant, however, the constants  $C_0$  and  $\tau_c$  are not uniquely determined: the same physics is described by using instead for any number  $k > 0$  the magnitude constant  $kC_0$  and the characteristic time  $k^{1/x}\tau$ . The CPE is central for the model proposed below, and for the discussion of the model parameters’ temperature dependence in fit to data (Sec. VI) we need a convention about the magnitude constant and the characteristic time. We take  $C_0$  to be a *universal, temperature-independent* number. The motivation is that, if any physics is to be ascribed to  $\tau_c$ , the CPE magnitude constant  $C_0$  should also make sense physically. Since squalane like most other organic glass-forming liquids has an instantaneous shear modulus, i.e., high-frequency plateau shear modulus, of order GPa, for both the alpha and the beta processes we fix the magnitude constant as follows:

$$C_0 \equiv 1 \text{ GPa}^{-1}. \quad (6)$$

### D. The Cole-Cole retardation element

What is here termed a Cole-Cole retardation element (CCRE) consists of a series connection of a CPE and a



capacitor (Fig. 3(b)). Recall that the capacitance  $C(\omega)$  of two elements in series with capacitances  $C_1(\omega)$  and  $C_2(\omega)$  is given by  $1/C(\omega) = 1/C_1(\omega) + 1/C_2(\omega)$ . Thus if the CCRE capacitor's value is  $J_0$ , the CCRE compliance  $J(\omega)$  is given by

$$\frac{1}{J(\omega)} = \frac{1}{J_0} + \frac{1}{C_0(i\omega\tau_c)^{-x}}. \quad (7)$$

The CCRE is named after the Cole-Cole dielectric capacitance function from 1941,<sup>48</sup> which in the mechanical language is the following expression:

$$J(\omega) = \frac{J_0}{1 + (i\omega\tau)^x}, \quad (8)$$

where  $J_0$  is the DC (steady-state) shear compliance and  $\tau$  the inverse angular loss-peak frequency. It is straightforward to show that Eq. (7) leads to Eq. (8) if one identifies

$$\tau \equiv \tau_c \left( \frac{J_0}{C_0} \right)^{1/x}. \quad (9)$$

Note that the characteristic time  $\tau_c$  is *not* in general identical to the inverse loss-peak frequency of the CCRE.

The fit to data (Sec. IV) gives CPE characteristic times that are thermally activated for both the alpha and the beta process. As demonstrated in Fig. 12 below, the alpha CPE characteristic time activation energy is proportional to the instantaneous (plateau) shear modulus, whereas the beta CPE characteristic time activation energy is temperature independent. Physically, we think of each CPE's characteristic time  $\tau_c$  as reflecting this element's "inner" clock somewhat analogous to the material time of the Narayanaswamy physical-aging theory.<sup>49–52</sup>

### E. Model for the dynamic shear-mechanical properties

To arrive at an electrical-equivalent circuit model of a supercooled liquid's shear dynamic properties, we first note that a standard parallel electrical RC element corresponds to the classical Maxwell model of viscoelasticity. This beautifully simple model is based on the assumption that the stress decays exponentially to zero whenever the sample is at rest.<sup>1,5,53</sup> If the time-dependent shear stress is denoted by  $\sigma(t)$ , the shear displacement (strain) by  $\gamma$ , the DC shear viscosity by  $\eta_0$ , and the instantaneous shear modulus by  $G_\infty$ , the differential equation describing the Maxwell model for an arbitrary shear rate as a function of time,  $\dot{\gamma}(t)$ , is<sup>1,5,53</sup>

$$\dot{\gamma}(t) = \frac{\sigma(t)}{\eta_0} + \frac{\dot{\sigma}(t)}{G_\infty}. \quad (10)$$

The Maxwell model is equivalent to a parallel electrical RC element because for such an element the voltage is the same across the resistor and the capacitor, which in the Maxwell model corresponds to having the same shear stress. The resistor current corresponds to the first term on the right hand side of Eq. (10) (a dashpot in the traditional language of viscoelasticity) and the capacitor current corresponds to the second term (a spring in the viscoelastic language).

The Maxwell model is too simple to fit data for glass-forming liquids, however, and must be extended by including one or more non-trivial dissipative terms. This paper's basic idea is that these terms are described by CCRES placed in

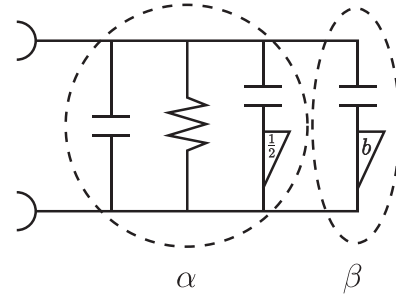


FIG. 4. Electrical-equivalent-circuit model for the dynamic shear-mechanical properties of a supercooled liquid. The model is characterized by additivity of the alpha and beta compliances. The alpha process is represented by a standard RC element—corresponding to the Maxwell model Eq. (10)—in parallel with a Cole-Cole retardation element (CCRE) with exponent 1/2. The beta process is represented by an additional CCRE. The model has seven parameters, one for each basic element except for the beta CPE element that has two parameters. In the fit to squalane data, the three dimensionless parameters are assumed to be temperature independent, corresponding to the assumption that the alpha and beta shear compliances separately obey time-temperature superposition (TTS).

parallel to the Maxwell RC element, one for the alpha process and one for the beta process (Fig. 4).

In the model, none of the two CCRES are inherently linked to the alpha process RC element. Nevertheless, one CCRE will be regarded as a part of the alpha process for the following reasons. Previous publications of the *Glass and Time* group have presented experimental<sup>28,54,55</sup> and theoretical<sup>56–58</sup> evidence that in the absence of beta relaxation the alpha process has a generic  $\omega^{-1/2}$  high-frequency decay of the dielectric loss and shear compliance. This is an old idea that keeps resurfacing, recently in an interesting biophysical context,<sup>59</sup> and a generic  $\omega^{-1/2}$  high-frequency decay is the characteristic feature of the 1967 Barlow-Erginsav-Lamb (BEL) model.<sup>1,53,56,60,61</sup> In view of this we fix the exponent to 1/2 for one CCRE and regard this element as a part of the alpha process. Confirming this assignment, for liquids without a mechanical beta relaxation like the silicone diffusion pump oils DC704 and DC705, the dynamic shear compliance is well fitted by the model of Fig. 4 without the beta CCRE (unpublished). It should be mentioned that a finite one-dimensional so-called diffusion chain describing, e.g., the relation between temperature and heat flux entering from one end has a compliance function that is very close to that of the alpha CCRE of the model in Fig. 4.

The dynamic shear compliance is a sum of the individual elements' shear compliances. Thus the model leads to the following expression, which defines the parametrization used henceforth:

$$J(\omega) = J_\alpha \left( 1 + \frac{1}{i\omega\tau_\alpha} + \frac{k_1}{1 + k_2(i\omega\tau_\alpha)^{1/2}} \right) + \frac{J_\beta}{1 + (i\omega\tau_\beta)^b}. \quad (11)$$

For later use, we note that the instantaneous (plateau) shear modulus  $G_\infty = \lim_{\omega \rightarrow \infty} G(\omega) = \lim_{\omega \rightarrow \infty} 1/J(\omega)$  is given by

$$G_\infty = \frac{1}{J_\alpha}. \quad (12)$$

The modulus plateau *between* the alpha and beta processes at temperatures low enough that these are well separated, i.e., when frequencies exist obeying  $\omega\tau_\alpha \gg 1$  and  $\omega\tau_\beta \ll 1$ , is denoted by  $G_{p,\alpha\beta}$  and given by

$$G_{p,\alpha\beta} = \frac{1}{J_\alpha + J_\beta}. \quad (13)$$

In the low-frequency limit, the shear compliance diverges as  $\propto 1/i\omega\tau_\alpha$ , as required for any liquid with a finite DC viscosity. In the DC limit, the real part of the shear compliance, the so-called recoverable shear compliance, is given by

$$\text{Re}(J(0)) = (1 + k_1)J_\alpha + J_\beta. \quad (14)$$

The model has seven parameters:

- Two compliance strengths  $J_\alpha$  and  $J_\beta$  [unit: 1/GPa];
- Two relaxation times  $\tau_\alpha$  and  $\tau_\beta$  [unit: s];
- Two alpha “shape parameters”  $k_1, k_2$  [dimensionless];
- The beta CCRE exponent  $b$  [dimensionless].

We shall assume that time-temperature superposition (TTS) applies for both the alpha and the beta processes, implying that in fit to data the three dimensionless shape parameters  $k_1, k_2$ , and  $b$  do not vary with the temperature. The parameters allowed to vary with temperature are the two compliance strengths and the two relaxation times.

The characteristic times of the alpha and beta CPEs are denoted by  $\tau_{c,\alpha}$  and  $\tau_{c,\beta}$ , respectively. In the below fit to the squalane data we take as mentioned the constants  $k_1$  and  $k_2$  to be independent of temperature. This implies that  $\tau_{c,\alpha} \propto \tau_\alpha$  with a temperature-independent constant of proportionality, and for this reason  $\tau_c$  will not be discussed separately from  $\tau_\alpha$ . The beta characteristic time  $\tau_{c,\beta}$ , on the other hand, is not

proportional to  $\tau_\beta$  in its temperature variation, which makes both beta times important to keep track of (Sec. VI).

#### IV. FITTING THE MODEL TO THE DATA FOR SQUALANE

The model was fitted to the squalane data of Fig. 2 using MATLAB’s “fminsearch” Nelder-Mead downhill simplex least-squares fitting procedure. The fit excluded data taken at too low a temperature to be in equilibrium or at such high temperatures that the alpha and beta process have almost completely merged. These limitations leave data for temperatures between 168 K and 182 K for fitting and parameter identification.

The data for the real and imaginary parts of the frequency-dependent shear modulus cover angular frequencies ranging from 10 mHz to 30 kHz, with up to 16 frequencies per decade evenly distributed on a logarithmic scale. The data were fitted to Eq. (11) for the shear-modulus (fitting to the shear compliance would have been dominated by the low-frequency compliance divergence). First, the three temperature-independent shape parameters  $k_1, k_2$ , and  $b$  were identified by fitting to the 172 K data, which have the alpha and the beta loss peaks both well within the frequency window, but still clearly separated. Subsequently, the four remaining parameters were determined from the best fit at each temperature.

Figure 5 compares model fits (full green curves) to data (black crosses). Figure 5(a) compares model prediction to data for the real part of the dynamic shear modulus, Fig. 5(b) compares the same for the imaginary part, and Fig. 5(c) compares model prediction versus data in the Nyquist plot of the shear modulus. Figures 5(d)–5(f) give the same for the dynamic shear compliance.

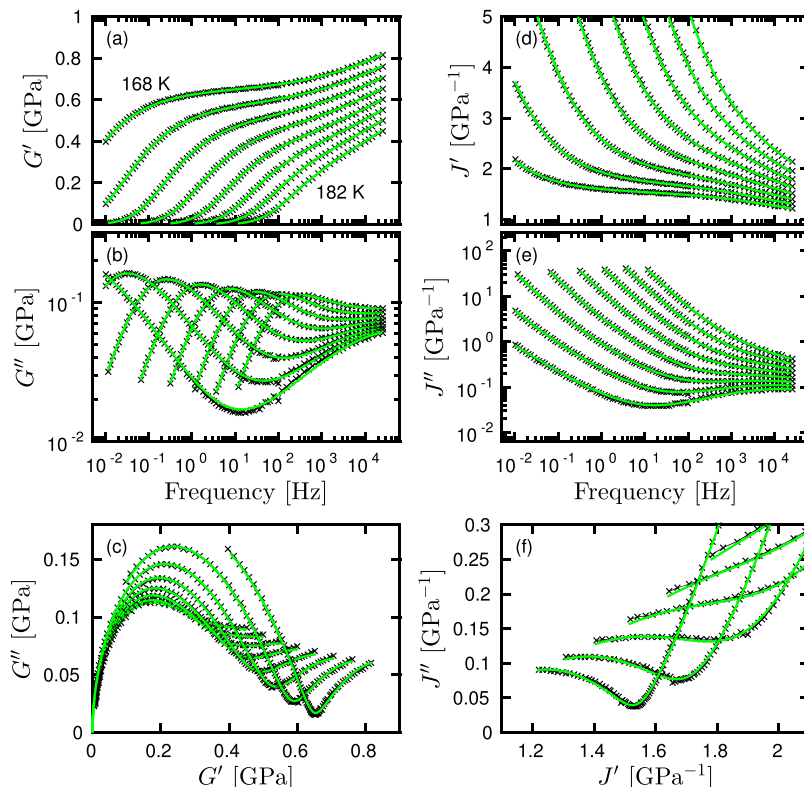


FIG. 5. Comparison between liquid-phase data (black crosses) and model predictions Eq. (11) (full green curves). At each temperature the four free parameters of dimension were determined as described in the text, after first identifying the three temperature-independent dimensionless parameters  $k_1, k_2$ , and  $b$  by fitting to the 172 K data.

The fits are excellent, but given the number of free parameters this may not appear very surprising. Our experience with fitting data to similar models over the last 20 years shows, however, that the present model is better than other models with the same number of parameters. As an illustration of this, we have compared to a fit assuming a Havriliak-Negami (HN) type function for the alpha process. The function fitted to data is the following:

$$J(\omega) = J_{\alpha}^{\text{HN}} \left( 1 - \frac{1}{(1 + (i\omega\tau_{\alpha}^{\text{HN}})^c)^a} \right)^{-1} + \frac{J_{\beta}^{\text{HN}}}{1 + (i\omega\tau_{\beta}^{\text{HN}})^b}. \quad (15)$$

This has the same number of parameters as Eq. (11): two strength parameters, two relaxation times, and three dimensionless shape parameters ( $a$ ,  $b$ ,  $c$ ). A qualitative difference to Eq. (11) should be mentioned, because the latter has a finite recoverable compliance, i.e., a finite low-frequency limit of  $J'(\omega)$ , whereas Eq. (15) like the BEL model<sup>60</sup> diverges in this limit. We determined the best-fit parameters in the same way as above. The fit to data is not as good as that of Eq. (11), which is clear from Fig. 6 that compares the overall quality of the two best fits as functions of temperature.

Returning to the model Eq. (11), Fig. 7 shows the temperature variation of the four free parameters. Figure 7(a) shows how the alpha and beta relaxation times  $\tau_{\alpha}$  and  $\tau_{\beta}$  vary with temperature. As for any glass-forming liquid, the alpha relaxation time increases strongly when the temperature is decreased. The beta relaxation time  $\tau_{\beta}$  is almost constant and, in fact, not even a monotonic function of temperature. In contrast, the beta characteristic time  $\tau_{c,\beta}$  decreases with temperature. The dielectric beta loss-peak frequency is usually reported to be Arrhenius,<sup>40,65</sup> but it is important to note that almost all literature data for  $\tau_{\beta}$  (the inverse beta loss-peak frequency) refer to the glass phase, not to the metastable liquid phase about  $T_g$ . Figure 7(b) shows the best-fit shear-compliance strengths  $J_{\alpha}$  and  $J_{\beta}$  as functions of temperature. Note that the beta process strength varies considerably more than the alpha strength.

These findings are consistent with previous ones for the beta dielectric relaxation process, which may be summarized as follows.<sup>62–64,66</sup> In the metastable liquid phase, the relaxation

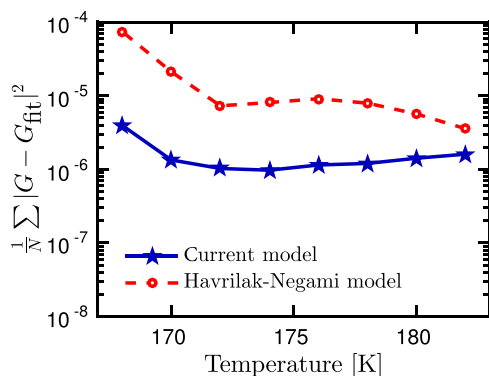


FIG. 6. Comparing the quality of fitting data to Eq. (11) and to Eq. (15), quantified via the frequency-averaged deviation of the best-fit complex shear modulus from that of the data. Although the two models have the same number of parameters, the former fits the data better by at least a factor of two and more than a factor of ten at low temperatures.

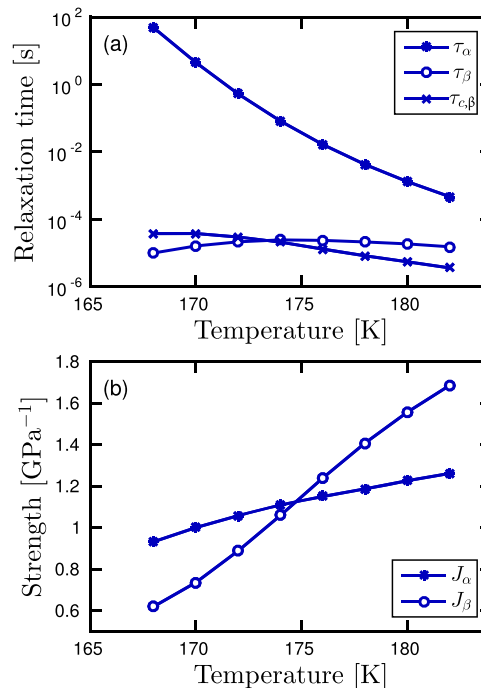


FIG. 7. Temperature dependence of the parameters when Eq. (11) is fitted to the shear-modulus data of Fig. 2 assuming temperature independence of the three shape parameters  $k_1$ ,  $k_2$ , and  $b$ , which were identified by fitting to the 172 K data resulting in  $k_1 = 7.9$ ,  $k_2 = 4.8$ , and  $b = 0.36$ . (a) shows the alpha and beta relaxation times,  $\tau_{\alpha}$  and  $\tau_{\beta}$ , as well as the beta characteristic time  $\tau_{c,\beta}$ . Note that  $\tau_{c,\beta}$  differs from  $\tau_{\beta}$  and has a more systematic variation with temperature.  $\tau_{\alpha}$  decreases strongly with increasing temperature, which is a well-known feature of glass-forming liquids. (b) shows the temperature dependence of the shear-compliance strengths  $J_{\alpha}$  and  $J_{\beta}$ . The latter changes by a almost factor of three, whereas  $J_{\alpha}$  changes by just 25% over the same range of temperatures. The results of (a) and (b) for the beta process are qualitatively similar to previous findings of ours for the dielectric beta loss-peak frequency of glass-forming liquids, which is found to be Arrhenius in the glass phase but only weakly temperature dependent in the metastable liquid phase, whereas the beta strength has the opposite behavior with strong temperature dependence in the liquid and weak in the glass.<sup>62–64</sup>

strength increases considerably with increasing temperature, whereas the relaxation time is almost temperature independent; in the glassy phase, the strength is almost constant, whereas the loss-peak frequency (inverse relaxation time) is strongly temperature dependent (Arrhenius). As an alternative to the minimal model of Ref. 64, it is possible to rationalize these properties of the beta process—as well as its behavior under annealing of the out-of-equilibrium liquid—by assuming that the relaxation strength freezes at the glass transition, whereas the characteristic time  $\tau_{c,\beta}$  is Arrhenius with an activation energy that is unaffected by the glass transition (unpublished).

## V. DATA FOR THE DYNAMIC ADIABATIC BULK MODULUS OF SQUALANE

Figure 8 shows our transducer for measuring the dynamic adiabatic bulk modulus. It consists of a radially polarized piezo-ceramic spherical shell with electrodes on the inner and outer surfaces. An applied electrical potential induces a slight compression or expansion of the sphere in which the liquid is placed (the top is a reservoir allowing for the liquid's thermal expansion).<sup>28,67,68</sup> Figure 9 shows data for the real



FIG. 8. The piezo-ceramic transducer used for measuring the dynamic adiabatic bulk modulus.<sup>28–30,67,68</sup> The device consists of a piezo-electric ceramic shell with electrodes on both sides with wires connected to a frequency analyzer. The inner diameter is 18 mm and the shell thickness is 0.5 mm. A small hole in the shell makes it possible to fill the transducer with liquid at room temperature at which the viscosity is low. A tube acting as a liquid reservoir is attached on top of the hole, which ensures that the sphere remains filled as the liquid inside contracts upon cooling.

and imaginary parts of the dynamic adiabatic bulk modulus  $K(\omega) = K'(\omega) + iK''(\omega)$  as well as a Nyquist plot of the same data.

Comparing the bulk modulus loss in Fig. 9(b) to the shear modulus loss in Fig. 2(b), we see a qualitatively similar behavior with an alpha loss peak that moves rapidly to lower frequencies upon cooling and a large beta peak

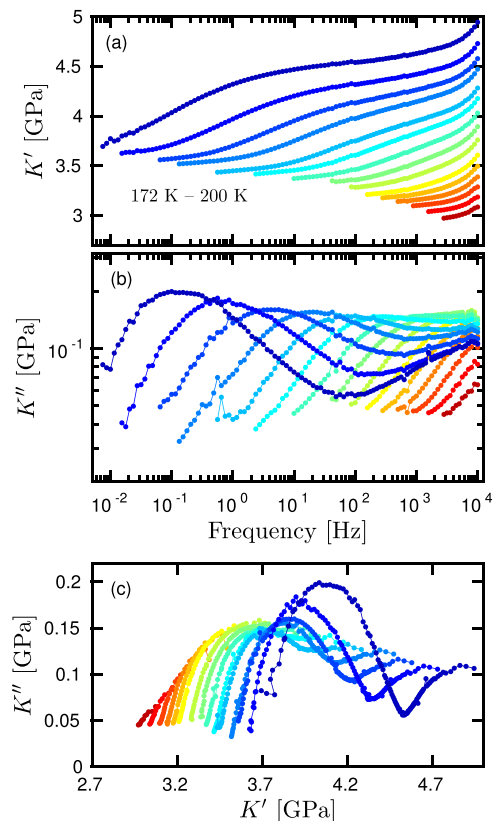


FIG. 9. Data for the dynamic adiabatic bulk modulus of squalane  $K(\omega) = K'(\omega) + iK''(\omega)$  covering temperatures from 172 K to 200 K. (a) and (b) show the real and the imaginary parts of  $K(\omega)$ , respectively. (c) shows a Nyquist plot of the same data.

appearing. To the best of our knowledge, this is the first observation of a beta process for the dynamic bulk modulus.

How to interpret the similarity between the dynamic shear and bulk moduli? This finding is consistent with many previous ones,<sup>28,33</sup> but it is important to emphasize that there is no fundamental reason for the similarity. This is because the dynamic bulk modulus—whether adiabatic or isothermal—is a *scalar* linear-response function, whereas the dynamic shear modulus is a *vector* linear-response function. As discussed by Meixner long time ago, these functions belong to fundamentally different symmetry classes.<sup>45</sup> Nevertheless, by reference to the Eshelby picture of structural rearrangements within a surrounding elastic matrix, Buchenau has recently discussed how the relaxational parts of the bulk and shear moduli may be connected<sup>69</sup> in arguments that may be extended to finite frequencies, thus establishing a connection between  $G(\omega)$  and  $K(\omega)$ .

Referring to the energy-bond formalism,<sup>34–38</sup> there are two fundamental thermodynamic scalar energy bonds: a thermal energy bond with effort equal to temperature difference and flow equal to entropy current, and a mechanical bond with effort equal to minus pressure difference and flow equal to the rate of volume change. Consistent with Buchenau’s reasoning,<sup>69</sup> we propose a general energy-bond model in which all dissipation connected with the two scalar thermodynamic energy bonds is controlled by the dynamic shear modulus (or, equivalently, the dynamic shear compliance). A representation of this idea is given in Fig. 10(b). An energy-bond diagram of this sort implies that the system in question is a “single-order-parameter” liquid.<sup>38,70–72</sup> This is equivalent to being an R simple system, i.e., one with so-called isomorphs, which are lines in the thermodynamic phase diagram along which the dynamics is invariant to a good approximation.<sup>73–76</sup>

In Fig. 10(b) there may be several non-dissipative elements, but the important point is that these are all connected to the element of Fig. 4 via a single, “internal” energy bond. The predictions for the dynamic adiabatic/isothermal bulk moduli (or those of the dynamic expansion coefficient<sup>77</sup>) depend, of course, not just on the dynamic shear modulus (compliance) but also on the non-dissipative elements. For a system described by Fig. 10(b), one *a priori* expects that all the scalar response functions at any given temperature have alpha and beta processes located at frequencies similar to those of the shear modulus’ alpha and beta processes.

As an example of the general modeling philosophy of Fig. 10(b), Fig. 11(b) gives a specific model for  $K(\omega)$  in terms of  $G(\omega)$ . First, Fig. 11(a) demonstrates the similarity between the relaxation times of the equilibrium shear-stress fluctuations determining  $G(\omega)$  via the fluctuation-dissipation theorem (red circles) and those of the pressure fluctuations determining  $K(\omega)$  (blue stars). Clearly, these two times are of the same order of magnitude and have similar dependence on temperature. This means that a model of the form given in Fig. 10(b) makes sense. There are many different such models, the one shown in Fig. 11(b) is just an example. At each temperature there are only a few fitting parameters while the entire nontrivial frequency dependence is determined by  $G(\omega)$ . In the fit to data, we took the zero-frequency (adiabatic) bulk modulus  $K(0)$  measured at the temperature in question as input,



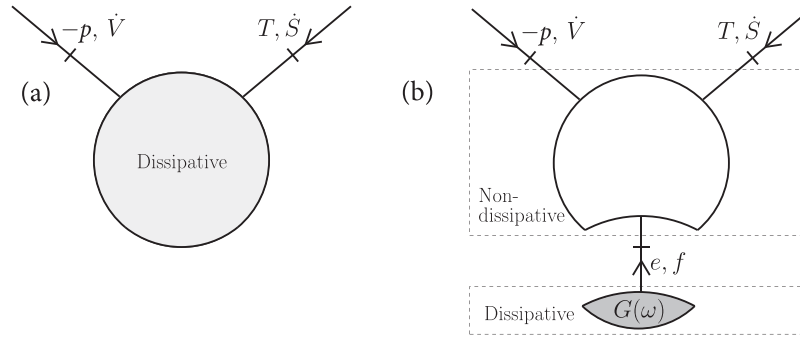


FIG. 10. Schematic energy-bond diagram for the linear dynamic responses of the two fundamental scalar thermodynamic energy bonds: the thermal bond defined by effort and flow being temperature  $T$  and entropy flow  $\dot{S}$ , respectively, and the mechanical bond defined by effort and flow being minus pressure  $-p$  and the rate of volume change  $\dot{V}$ , respectively. (a) The general scenario. (b) The situation in which all dissipation via a single “internal” energy bond is controlled by the dynamic shear modulus, an instance of the general single-order-parameter scenario.<sup>70</sup> This diagram provides an abstract link between the vector energy bond associated with the mechanical shear deformation and the two scalar thermodynamic energy bonds.

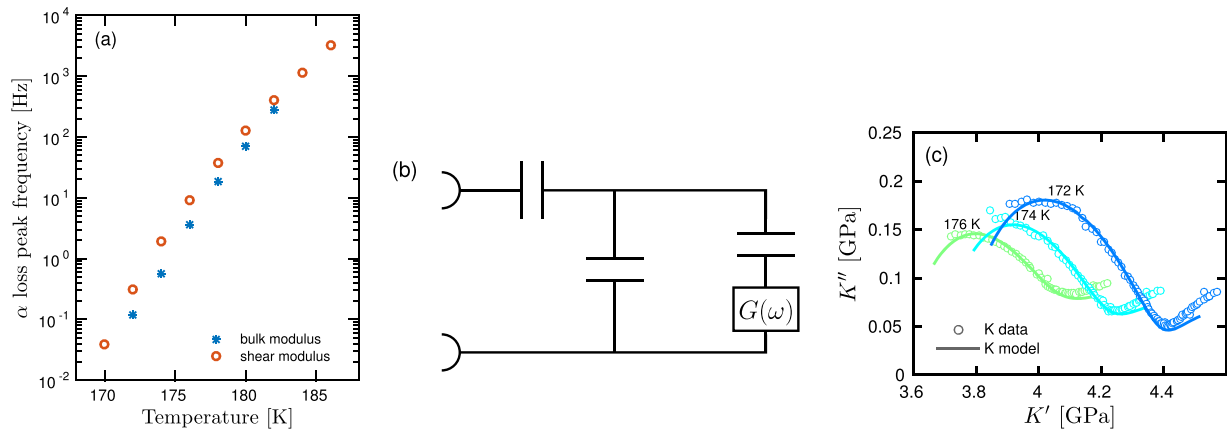


FIG. 11. (a) Loss-peak frequencies of the dynamic shear modulus (red circles) and the dynamic adiabatic bulk modulus (blue asterisks) as functions of temperature. Clearly, the two probes of the dynamics have similar relaxation times and follow each other in the slowing down upon cooling. This may be rationalized by a model in which the bulk modulus is controlled by the shear modulus. (b) An example of such a model. This is an instance of the general model philosophy illustrated in Fig. 10(b) in which all dissipation is controlled by the dynamic shear modulus. (c) Results from fitting the model in (b) to the dynamic bulk modulus data plotted in a Nyquist plot. Inputs to the fits at each temperature are the measured  $G(\omega)$  and zero-frequency adiabatic bulk modulus  $K(0)$  (inverse compressibility), leaving two fitting parameters to determine the three capacitors of (b). We conclude that it is possible to fit the dynamic bulk modulus data in this way, at least qualitatively.

leaving just two free parameters. Nevertheless, the Nyquist plot of  $K(\omega)$  demonstrates a reasonable fit (Fig. 11(c)).

## VI. DISCUSSION

This paper has demonstrated that dynamic shear-mechanical data for squalane may be fitted very well with the electrical-equivalent circuit model of Fig. 4 leading to Eq. (11) for the dynamic shear compliance. The model assumes additivity of the alpha and beta shear compliances. The model has seven parameters, one more than alternative phenomenological models.<sup>26,78</sup> In the fit to data, however, the three dimensionless shape parameters were taken to be temperature independent, a consequence of our fundamental assumption that time-temperature superposition applies separately to both the alpha and the beta compliance functions. We conjecture that this applies generally for glass-forming liquids. In this picture, the observed deviations from TTS derive simply from the merging of the alpha and beta processes.

How to physically justify that the Maxwell RC element and the two CCREs should be combined in a way that is

additive in their shear compliances, not in their shear moduli? There are no logically compelling arguments for this. We think of it as follows. Imagine a small particle in the liquid. The particle’s mean-square displacement (MSD) as a function of time in one axis direction,  $\langle \Delta x^2(t) \rangle$ , will have a rapid increase on the phonon time scale, followed by a transition to the long-time diffusive behavior proportional to time. If one assumes that the alpha and beta processes are statistically independent,<sup>79</sup> this implies for the particle’s motion that  $\Delta x(t) = \Delta x_\alpha(t) + \Delta x_\beta(t)$  with  $\langle \Delta x_\alpha(t) \Delta x_\beta(t) \rangle = 0$ . In this case, the MSD is a sum of an alpha and a beta contribution:  $\langle \Delta x^2(t) \rangle = \langle \Delta x_\alpha^2(t) \rangle + \langle \Delta x_\beta^2(t) \rangle$ . If one moreover assumes the Stokes-Einstein relation between the dynamic shear viscosity and the particle’s dynamic friction coefficient, this translates via the fluctuation-dissipation theorem into additivity of the dynamic shear compliances for the alpha and beta processes.

In regard to the single-particle MSD, note that associated with any function  $\langle \Delta x^2(t) \rangle$  there is a characteristic time, namely the time at which the particle has moved a typical intermolecular distance. This is how we think of each CPE basic element’s characteristic  $\tau_c$ , which was defined by the

absolute value of the compliance at  $\omega = 1/\tau_c$  being  $1 \text{ GPa}^{-1}$  (Eq. (6)). For the beta process, it is important to distinguish between this time and the inverse loss-peak frequency  $\tau_\beta$ , because via Eq. (9) the latter time's temperature variation reflects the combined effect of the changing compliance strength  $J_\beta$  and the Arrhenius  $\tau_{c,\beta}$  (see below).

The electrical-equivalent circuit model Fig. 4 is identical to that proposed in Ref. 26 except for an important extra capacitor, the one in the alpha CCRE. This capacitor eliminates an unphysical feature of our previous model, which predicted an infinite recoverable shear compliance. This unphysical feature is also present in the BEL model from 1967.<sup>1,60</sup> Introducing the extra capacitor has the added benefit of resulting in symmetry between the alpha and beta CCREs, the only difference being that the alpha CCRE has the exponent fixed to 1/2.

We note that if the alpha CCRE's relaxation time is much shorter than  $RC$ , the circuit mimics the situation reported in recent papers for the dielectric relaxation of monohydroxy alcohols, for which one observes a low-frequency Debye-type process followed by, in order of increasing frequency, first an alpha and then, in most liquids, a beta process.<sup>80,81</sup>

As regards the temperature dependence of the best-fit model parameters for squalane we have compared to the prediction of the shoving model.<sup>5,82</sup> If  $\tau_0 \cong 10^{-14}$  s is a typical phonon time and  $V_c$  the so-called characteristic volume assumed to be temperature independent, the shoving model predicts the following relation between the temperature variation of the alpha relaxation time and that of the instantaneous, i.e., high-frequency plateau, shear modulus  $G_\infty$ :

$$\tau_\alpha(T) = \tau_0 e^{V_c G_\infty(T)/RT}. \quad (16)$$

The shoving model, which links a supercooled liquid's fragility to the temperature variation of  $G_\infty$ , fits data well for many glass-forming liquids.<sup>5,28,82,83</sup> This model relates directly to Eq. (11) since if it applies, via Eq. (12) the number of temperature-dependent fitting parameters is reduced from four to three. We have not made this assumption in the fit to data, but have instead checked Eq. (16) against the best-fit parameters. This is done in Fig. 12 in which the relaxation times  $\tau_\alpha$  and  $\tau_{c,\beta}$  have been converted into temperature-dependent activation energies  $E(T)$  by writing for each  $\tau(T) = \tau_0 \exp(E(T)/RT)$  with  $\tau_0 = 10^{-14}$  s. According to the shoving model  $E_\alpha(T) = V_c G_\infty(T)$ . By comparing the black crosses and the red triangles in Fig. 12, we conclude that the shoving model applies with  $G_\infty$  calculated from the best fit model parameters via Eq. (12).

If the shoving model is instead interpreted with  $G_\infty$  taken to be the modulus *between* the alpha and beta processes, the quantity  $G_{p,\alpha\beta}$  given by Eq. (13), the model does not apply (blue crosses). This confirms the basic physical assumption of the shoving model, which is that the actual barrier transition for a rearrangement of molecules is very fast, presumably on the picosecond time scale. Consequently, the activation energy is proportional to the shear modulus of the liquid measured on this short time scale at which the liquid behaves like a solid, not to the plateau modulus between the alpha and beta relaxations.

Our model for  $G(\omega)$  (Fig. 4) consists of a Maxwell element in parallel with two CCREs. One may speculate that additional high-frequency mechanical processes beyond

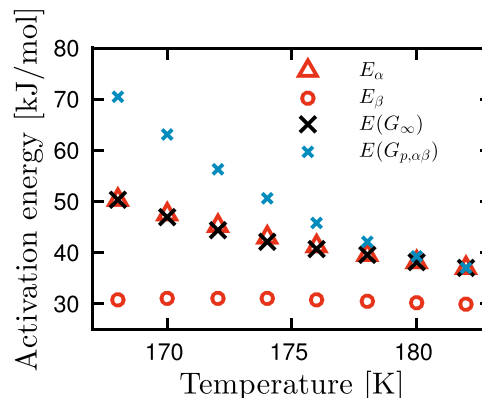


FIG. 12. Activation energies calculated from  $E = RT \ln(\tau/\tau_0)$  for the alpha relaxation time  $\tau_\alpha$  (red triangles) and the beta characteristic time  $\tau_{c,\beta}$  (red circles), assuming in both cases that  $\tau_0 = 10^{-14}$  s.  $E_\beta$  is temperature independent to a good approximation, showing that  $\tau_{c,\beta}$  is Arrhenius. The alpha relaxation time activation energy is compared to the prediction of the shoving model (black crosses) according to which  $E_\alpha = V_c G_\infty$  where  $V_c$  is the “characteristic” (temperature-independent) volume (per mole) and  $G_\infty$  is the instantaneous, i.e., high-frequency limiting shear modulus, which according to Eq. (11) equals  $1/J_\alpha$ . The shoving model is confirmed. If one in this model, however, instead of  $G_\infty$  uses the modulus corresponding to frequencies between the alpha and beta processes,  $G_{p,\alpha\beta}$  (Eq. (13)), the  $E_\alpha$  prediction results in the blue crosses that do not fit the red triangle data. The shoving-model based activation energies  $E(G_\infty)$  and  $E(G_{p,\alpha\beta})$  were both normalized to predict the correct alpha activation energy at  $T = 182$  K (leading to  $V_c$  being 9% of the molar volume for the  $E(G_\infty)$  case).

the alpha and beta relaxations can be included by adding further CCREs in parallel, each one still subject to time-temperature superposition, i.e., with temperature-independent shape parameters.

To summarize, an excellent fit to the dynamic shear-mechanical data of squalane is provided by an electrical-equivalent circuit model with seven parameters. The model assumes an  $\omega^{-1/2}$  high-frequency decay of the alpha compliance,<sup>56–58,60</sup> additivity of the alpha and beta compliance functions, and that these functions separately obey time-temperature superposition. The latter assumption reduces the number of parameters varying with temperature to four. The best fit parameters confirm the shoving model and show, moreover, that the beta process characteristic time has a temperature-independent activation energy, i.e., is Arrhenius. If these findings were both incorporated as model assumptions, the number of parameters varying with temperature would reduce to two. These could be taken to be, e.g., the compliance magnitudes  $J_\alpha$  and  $J_\beta$ .

We also presented data for the adiabatic dynamic bulk modulus and showed that these may be interpreted in terms of a single-order-parameter model in which all dissipation is controlled by the shear-mechanical properties. Such a model connects the class of scalar viscoelastic linear-response functions to that of vector symmetry.<sup>45</sup>

In regard to future works, one obvious thing is to compare the model to shear-mechanical data for other glass-forming liquids. We have not done so systematically, but have found in all cases so far investigated that the model works well (unpublished). The hope is that the model is general, in this way providing a step towards a microscopic understanding of supercooled liquids' shear-dynamical properties.

## ACKNOWLEDGMENTS

Figure 10(b) is a special case of the general energy-bond diagram for a system with a single order parameter identified by our *Glass and Time* colleague Tage Christensen about 15 years ago in response to a question raised by Niels Boye Olsen. This initiated a development leading to Ref. 70 that in turn led to the isomorph theory.<sup>74–76,84</sup>

- <sup>1</sup>G. Harrison, *The Dynamic Properties of Supercooled Liquids* (Academic, New York, 1976).
- <sup>2</sup>S. Brawer, *Relaxation in Viscous Liquids and Glasses* (American Ceramic Society, Columbus, OH, 1985).
- <sup>3</sup>M. D. Ediger, C. A. Angell, and S. R. Nagel, "Supercooled liquids and glasses," *J. Phys. Chem.* **100**, 13200–13212 (1996).
- <sup>4</sup>C. A. Angell, "Formation of glasses from liquids and biopolymers," *Science* **267**, 1924–1935 (1995).
- <sup>5</sup>J. C. Dyre, "The glass transition and elastic models of glass-forming liquids," *Rev. Mod. Phys.* **78**, 953–972 (2006).
- <sup>6</sup>L. Berthier and G. Biroli, "Theoretical perspective on the glass transition and amorphous materials," *Rev. Mod. Phys.* **83**, 587–645 (2011).
- <sup>7</sup>G. Floudas, M. Paluch, A. Grzybowski, and K. L. Ngai, *Molecular Dynamics of Glass-Forming Systems: Effects of Pressure* (Springer, Berlin, 2011).
- <sup>8</sup>F. H. Stillinger and P. G. Debenedetti, "Glass transition—Thermodynamics and kinetics," *Annu. Rev. Condens. Matter Phys.* **4**, 263–285 (2013).
- <sup>9</sup>R. D. Deegan, R. L. Leheny, N. Menon, S. R. Nagel, and D. C. Venerus, "Dynamic shear modulus of tricresyl phosphate and squalane," *J. Phys. Chem. B* **103**, 4066–4070 (1999).
- <sup>10</sup>R. Richert, K. Duvvuri, and L. T. Duong, "Dynamics of glass-forming liquids. VII. Dielectric relaxation of supercooled tris-naphthylbenzene, squalane, and decahydroisoquinoline," *J. Chem. Phys.* **118**, 1828–1836 (2003).
- <sup>11</sup>B. Jakobsen, K. Niss, and N. B. Olsen, "Dielectric and shear mechanical alpha and beta relaxations in seven glass-forming liquids," *J. Chem. Phys.* **123**, 234511 (2005).
- <sup>12</sup>M. J. P. Comunas, X. Paredes, F. M. Gacino, J. Fernandez, J.-P. Bazile, C. Boned, J. L. Daridon, G. Galliero, J. Pauly, and K. R. Harris, "Viscosity measurements for squalane at high pressures to 350 MPa from T = (293.15 to 363.15) K," *J. Chem. Thermodyn.* **69**, 201–208 (2014).
- <sup>13</sup>C. A. Angell, K. L. Ngai, G. B. McKenna, P. F. McMillan, and S. W. Martin, "Relaxation in glassforming liquids and amorphous solids," *J. Appl. Phys.* **88**, 3113–3157 (2000).
- <sup>14</sup>"Squalane," Wikipedia article (2017).
- <sup>15</sup>S. Bair, "Reference liquids for quantitative elasto-hydrodynamics: Selection and rheological characterization," *Tribol. Lett.* **22**, 197–206 (2006).
- <sup>16</sup>M. J. P. Comunas, X. Paredes, F. M. Gacio, J. Fernandez, J. P. Bazile, C. Boned, J. L. Daridon, G. Galliero, J. Pauly, K. R. Harris, M. J. Assael, and S. K. Mylona, "Reference correlation of the viscosity of squalane from 273 to 373 K at 0.1 MPa," *J. Phys. Chem. Ref. Data* **42**, 033101 (2013).
- <sup>17</sup>H. Spikes and Z. Jie, "History, origins and prediction of elasto-hydrodynamic friction," *Tribol. Lett.* **56**, 1–25 (2014).
- <sup>18</sup>K. A. G. Schmidt, D. Pagnutti, M. D. Curran, A. Singh, J. P. M. Trusler, G. C. Maitland, and M. McBride-Wright, "New experimental data and reference models for the viscosity and density of squalane," *J. Chem. Eng. Data* **60**, 137–150 (2015).
- <sup>19</sup>S. Bair, C. McCabe, and P. T. Cummings, "Comparison of nonequilibrium molecular dynamics with experimental measurements in the nonlinear shear-thinning regime," *Phys. Rev. Lett.* **88**, 058302 (2002).
- <sup>20</sup>L. M. Wang, S. Shahriari, and R. Richert, "Diluent effects on the Debye-type dielectric relaxation in viscous monohydroxy alcohols," *J. Phys. Chem. B* **109**, 23255–23262 (2005).
- <sup>21</sup>B. Brocklehurst and R. N. Young, "Rotation of aromatic hydrocarbons in viscous alkanes. 2. Hindered rotation in squalane," *J. Phys. Chem. A* **103**, 3818–3824 (1999).
- <sup>22</sup>B. A. Kowert and M. B. Watson, "Diffusion of organic solutes in squalane," *J. Phys. Chem. B* **115**, 9687–9694 (2011).
- <sup>23</sup>M. E. Saecker, S. T. Govoni, D. V. Kowalski, M. E. King, and G. M. Nathanson, "Molecular beam scattering from liquid surfaces," *Science* **252**, 1421–1424 (1991).
- <sup>24</sup>S. P. K. Köhler, S. K. Reed, R. E. Westacott, and K. G. McKendrick, "Molecular dynamics study to identify the reactive sites of a liquid squalane surface," *J. Phys. Chem. B* **110**, 11717–11724 (2006).
- <sup>25</sup>A. J. Barlow and A. Erginsav, "Viscoelastic retardation of supercooled liquids," *Proc. R. Soc. A* **327**, 175–190 (1972).
- <sup>26</sup>B. Jakobsen, K. Niss, C. Maggi, N. B. Olsen, T. Christensen, and J. C. Dyre, "Beta relaxation in the shear mechanics of viscous liquids: Phenomenology and network modeling of the alpha-beta merging region," *J. Non-Cryst. Solids* **357**, 267–273 (2011).
- <sup>27</sup>T. Christensen and N. B. Olsen, "A rheometer for the measurement of a high shear modulus covering more than seven decades of frequency below 50 kHz," *Rev. Sci. Instrum.* **66**, 5019–5031 (1995).
- <sup>28</sup>T. Hecksher, N. B. Olsen, K. A. Nelson, J. C. Dyre, and T. Christensen, "Mechanical spectra of glass-forming liquids. I. low-frequency bulk and shear moduli of DC704 and 5-PPE measured by piezoceramic transducers," *J. Chem. Phys.* **138**, 12A543 (2013).
- <sup>29</sup>B. Igarashi, T. Christensen, E. H. Larsen, N. B. Olsen, I. H. Pedersen, T. Rasmussen, and J. C. Dyre, "A cryostat and temperature control system optimized for measuring relaxations of glass-forming liquids," *Rev. Sci. Instrum.* **79**, 045105 (2008).
- <sup>30</sup>B. Igarashi, T. Christensen, E. H. Larsen, N. B. Olsen, I. H. Pedersen, T. Rasmussen, and J. C. Dyre, "An impedance-measurement setup optimized for measuring relaxations of glass-forming liquids," *Rev. Sci. Instrum.* **79**, 045106 (2008).
- <sup>31</sup>Details about the data can be obtained from the *Glass and Time* Data repository, found online at <http://glass.ruc.dk/data>.
- <sup>32</sup>N. Saglanmak, A. I. Nielsen, N. B. Olsen, J. C. Dyre, and K. Niss, "An electrical circuit model of the alpha-beta merging seen in dielectric relaxation of ultraviscous liquids," *J. Chem. Phys.* **132**, 024503 (2010).
- <sup>33</sup>B. Jakobsen, T. Hecksher, T. Christensen, N. B. Olsen, J. C. Dyre, and K. Niss, "Identical temperature dependence of the time scales of several linear-response functions of two glass-forming liquids," *J. Chem. Phys.* **136**, 081102 (2012).
- <sup>34</sup>P. V. Christiansen, *Dynamik og Diagrammer* (IMFUFA Tekst No. 8, Roskilde University, Roskilde, 1978).
- <sup>35</sup>D. C. Karnopp, D. L. Margolis, and R. C. Rosenberg, *System Dynamics—Modeling and Simulation of Mechatronic Systems*, 4th ed. (Wiley, New York, 2006).
- <sup>36</sup>H. Paynter, *Analysis and Design of Engineering Systems* (MIT Press, Cambridge, Massachusetts, 1961).
- <sup>37</sup>G. Oster, A. Perelson, and A. Katchalsky, "Network thermodynamics," *Nature* **234**, 393–399 (1971).
- <sup>38</sup>T. B. Schröder, N. P. Bailey, U. R. Pedersen, N. Gnan, and J. C. Dyre, "Pressure-energy Correlations in liquids. III. Statistical mechanics and thermodynamics of liquids with hidden scale invariance," *J. Chem. Phys.* **131**, 234503 (2009).
- <sup>39</sup>J. D. Ferry, *Viscoelastic Properties of Polymers*, 2nd ed. (Wiley, New York, 1970).
- <sup>40</sup>R. Richert, "Supercooled liquids and glasses by dielectric relaxation spectroscopy," *Adv. Chem. Phys.* **156**, 101–195 (2015).
- <sup>41</sup>E. A. DiMarzio and M. Bishop, "Connection between the macroscopic electric and mechanical susceptibilities," *J. Chem. Phys.* **60**, 3802–3811 (1974).
- <sup>42</sup>K. Niss, B. Jakobsen, and N. B. Olsen, "Dielectric and shear mechanical relaxations in glass-forming liquids: A test of the Gemant-DiMarzio-Bishop model," *J. Chem. Phys.* **123**, 234510 (2005).
- <sup>43</sup>U. Buchenau, "Shear and dielectric spectra in highly viscous liquids," *Phys. Rev. B* **83**, 052201 (2011).
- <sup>44</sup>A. Garcia-Bernabe, J. V. Lidon-Roger, M. J. Sanchis, R. Diaz-Calleja, and L. F. del Castillo, "Interconversion algorithm between mechanical and dielectric relaxation measurements for acetate of *cis*- and *trans*-2-phenyl-5-hydroxymethyl-1,3-dioxane," *Phys. Rev. E* **92**, 042307 (2015).
- <sup>45</sup>J. Meixner and H. G. Reik, "Thermodynamik der irreversiblen Prozesse," in *Prinzipien der Thermodynamik und Statistik/Principles of Thermodynamics and Statistics*, Handbuch der Physik/Encyclopedia of Physics, Vol. 2/3/2, edited by S. Flügge (Springer, Berlin, Heidelberg, 1959), pp. 413–523.
- <sup>46</sup>J. D. Bernal, "The Bakerian lecture, 1962. The structure of liquids," *Proc. R. Soc. London, Ser. A* **280**, 299–322 (1964).
- <sup>47</sup>A. K. Jonscher, *Universal Relaxation Law* (Chelsea Dielectric Press, London, 1996).
- <sup>48</sup>K. S. Cole and R. H. Cole, "Dispersion and absorption in dielectrics I. Alternating current characteristics," *J. Chem. Phys.* **9**, 341–351 (1941).
- <sup>49</sup>O. S. Narayanaswamy, "A model of structural relaxation in glass," *J. Am. Ceram. Soc.* **54**, 491–498 (1971).
- <sup>50</sup>G. W. Scherer, *Relaxation in Glass and Composites* (Wiley, New York, 1986).

- <sup>51</sup>T. Hecksher, N. B. Olsen, and J. C. Dyre, "Communication: Direct tests of single-parameter aging," *J. Chem. Phys.* **142**, 241103 (2015).
- <sup>52</sup>J. C. Dyre, "Narayananaswamy's 1971 aging theory and material time," *J. Chem. Phys.* **143**, 114507 (2015).
- <sup>53</sup>J. Lamb, "Viscoelasticity and lubrication: A review of liquid properties," *J. Rheol.* **22**, 317–347 (1978).
- <sup>54</sup>N. B. Olsen, T. Christensen, and J. C. Dyre, "Time-temperature superposition in viscous liquids," *Phys. Rev. Lett.* **86**, 1271–1274 (2001).
- <sup>55</sup>A. I. Nielsen, T. Christensen, B. Jakobsen, K. Niss, N. B. Olsen, R. Richert, and J. C. Dyre, "Prevalence of approximate  $\sqrt{t}$  relaxation for the dielectric process in viscous organic liquids," *J. Chem. Phys.* **130**, 154508 (2009).
- <sup>56</sup>J. C. Dyre, "Solidity of viscous liquids. III.  $\alpha$  relaxation," *Phys. Rev. E* **72**, 011501 (2005).
- <sup>57</sup>J. C. Dyre, "Solidity of viscous liquids. IV. Density fluctuations," *Phys. Rev. E* **74**, 021502 (2006).
- <sup>58</sup>J. C. Dyre, "Solidity of viscous liquids. V. Long-wavelength dominance of the dynamics," *Phys. Rev. E* **76**, 041508 (2007).
- <sup>59</sup>T. Ooshida, S. Goto, T. Matsumoto, and M. Otsuki, "Insights from single-file diffusion into cooperativity in higher dimensions," *Biophys. Rev. Lett.* **11**, 9–38 (2016).
- <sup>60</sup>A. J. Barlow, A. Erginsav, and J. Lamb, "Viscoelastic relaxation of supercooled liquids," *Proc. R. Soc. London* **298**, 481 (1967).
- <sup>61</sup>A. J. Barlow, "Viscoelastic relaxation of supercooled liquids," *Adv. Mol. Relax. Proc.* **3**, 253–266 (1972).
- <sup>62</sup>N. B. Olsen, "Scaling of  $\beta$ -relaxation in the equilibrium liquid state of sorbitol," *J. Non-Cryst. Solids* **235**, 399–405 (1998).
- <sup>63</sup>N. B. Olsen, T. Christensen, and J. C. Dyre, " $\beta$  relaxation of nonpolymeric liquids close to the glass transition," *Phys. Rev. E* **62**, 4435–4438 (2000).
- <sup>64</sup>J. C. Dyre and N. B. Olsen, "Minimal model for beta relaxation in viscous liquids," *Phys. Rev. Lett.* **91**, 155703 (2003).
- <sup>65</sup>G. P. Johari, "Effect of annealing on the secondary relaxations in glasses," *J. Chem. Phys.* **77**, 4619–4626 (1982).
- <sup>66</sup>J. Qiao, R. Casalini, and J.-M. Pelletier, "Effect of physical aging on Johari-Goldstein relaxation in La-based bulk metallic glass," *J. Chem. Phys.* **141**, 104510 (2014).
- <sup>67</sup>T. Christensen and N. B. Olsen, "Determination of the frequency-dependent bulk modulus of glycerol using a piezoelectric spherical shell," *Phys. Rev. B* **49**, 15396–15399 (1994).
- <sup>68</sup>D. Gundermann, K. Niss, T. Christensen, J. C. Dyre, and T. Hecksher, "The dynamic bulk modulus of three glass-forming liquids," *J. Chem. Phys.* **140**, 244508 (2014).
- <sup>69</sup>U. Buchenau, "Bulk and shear relaxation in glasses and highly viscous liquids," *J. Chem. Phys.* **136**, 224512 (2012).
- <sup>70</sup>N. L. Ellegaard, T. Christensen, P. V. Christiansen, N. B. Olsen, U. R. Pedersen, T. B. Schröder, and J. C. Dyre, "Single-order-parameter description of glass-forming liquids: A one-frequency test," *J. Chem. Phys.* **126**, 074502 (2007).
- <sup>71</sup>N. P. Bailey, T. Christensen, B. Jakobsen, K. Niss, N. B. Olsen, U. R. Pedersen, T. B. Schröder, and J. C. Dyre, "Glass-forming liquids: One or more 'order' parameters?" *J. Phys. Condens. Matter* **20**, 244113 (2008).
- <sup>72</sup>D. Gundermann, U. R. Pedersen, T. Hecksher, N. P. Bailey, B. Jakobsen, T. Christensen, N. B. Olsen, T. B. Schröder, D. Fragiadakis, R. Casalini, C. M. Roland, J. C. Dyre, and K. Niss, "Predicting the density-scaling exponent of a glass-forming liquid from Prigogine-Defay ratio measurements," *Nat. Phys.* **7**, 816–821 (2011).
- <sup>73</sup>U. R. Pedersen, N. Gnan, N. P. Bailey, T. B. Schröder, and J. C. Dyre, "Strongly correlating liquids and their isomorphs," *J. Non-Cryst. Solids* **357**, 320–328 (2011).
- <sup>74</sup>T. S. Ingebrigtsen, T. B. Schröder, and J. C. Dyre, "What is a simple liquid?" *Phys. Rev. X* **2**, 011011 (2012).
- <sup>75</sup>J. C. Dyre, "Hidden scale invariance in condensed matter," *J. Phys. Chem. B* **118**, 10007–10024 (2014).
- <sup>76</sup>J. C. Dyre, "Simple liquids' quasiuniversality and the hard-sphere paradigm," *J. Phys.: Condens. Matter* **28**, 323001 (2016).
- <sup>77</sup>K. Niss, D. Gundermann, T. Christensen, and J. C. Dyre, "Dynamic thermal expansivity of liquids near the glass transition," *Phys. Rev. E* **85**, 041501 (2012).
- <sup>78</sup>U. Buchenau, "Retardation and flow at the glass transition," *Phys. Rev. E* **93**, 032608 (2016).
- <sup>79</sup>G. Diezemann, U. Mohanty, and I. Oppenheim, "Slow secondary relaxation in a free-energy landscape model for relaxation in glass-forming liquids," *Phys. Rev. E* **59**, 2067–2083 (1999).
- <sup>80</sup>R. Böhmer, C. Gainaru, and R. Richert, "Structure and dynamics of monohydroxy alcohols—Milestones towards their microscopic understanding, 100 years after Debye," *Phys. Rep.* **545**, 125–195 (2014).
- <sup>81</sup>C. Gainaru, R. Figuli, T. Hecksher, B. Jakobsen, J. C. Dyre, M. Wilhelm, and R. Böhmer, "Shear-modulus investigations of monohydroxy alcohols: Evidence for a short-chain-polymer rheological response," *Phys. Rev. Lett.* **112**, 098301 (2014).
- <sup>82</sup>J. C. Dyre, N. B. Olsen, and T. Christensen, "Local elastic expansion model for viscous-flow activation energies of glass-forming molecular liquids," *Phys. Rev. B* **53**, 2171–2174 (1996).
- <sup>83</sup>T. Hecksher and J. C. Dyre, "A review of experiments testing the shoving model," *J. Non-Cryst. Solids* **407**, 14–22 (2015).
- <sup>84</sup>U. R. Pedersen, N. P. Bailey, T. B. Schröder, and J. C. Dyre, "Strong pressure-energy correlations in van der Waals liquids," *Phys. Rev. Lett.* **100**, 015701 (2008).